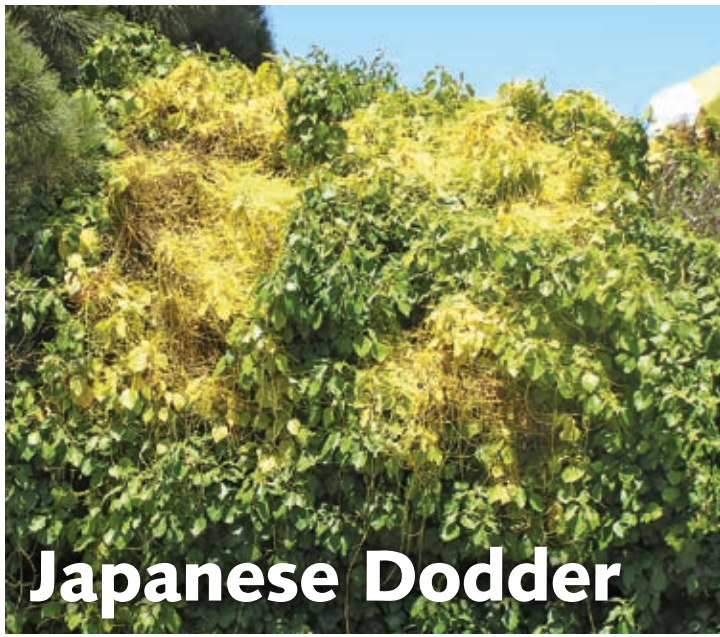


# Tshaj tawn txog cov nroj Nkauj Tswm Seb! Call 800-491-1899



### Tshaj tawn txog cov nroj Nkauj Tswm Seb!

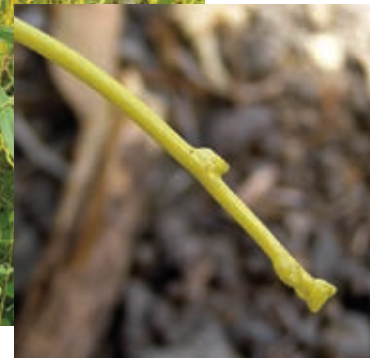
Yog tias nej pom cov nroj Nkauj Tswm Seb thov hu rau: 800-491-1899

**Nkauj Tswm Seb (Japanese dodder)** yog ib yam nroj tsis muaj nplooj thiab ci daj (cov tub txawj ntse tis npe hu ua *Cuscuta japonica*). Nkauj Tswm Seb ntev, zoo li txoj hlua ntswj khi mus rau lwm cov nroj. Nws tseem nqus cov dej uas yog tej hauv paus nroj tsuag thiab ua tau rau lawv tuag.

**Cov txhauv no tuaj rau hauv tej vaj, chaw ua si (park), hav zoo thiab chaw cog txiv hmab txiv ntoo.** Nws tua tau nroj tsuag, thiab tej ntoo yog ib qhov me me xwb. Tseem muaj ntau tshaj ntawd.

**Nkauj Tswm Seb tuaj sai thiab kis mus rau lwm qhov yooj yim heev li.** Ib hnuv twg xam maj tuaj ntev li 6 ntv. Nws ncav tej nroj uas ze ib tsob dhau rau ib tsob. Nws kuj ya losis nqa mus rau lwm qhov los ntawm, cua, dej, tibneeg, thiab noog kuj ua rau tuaj dua ib cov tshiab. Tom qab lub caij ntuj no uas tuag lawm kuj rov qab tuaj zoo heev rau lub caij nroj tsuag hlav.

**Yog yuav tua cov txhauv no lub hauv paus thiab tej ceg yuav tsum muab txiav thiab khawb.** Txhua tus ceg thiab hauv paus yuav tsum muab coj mus faus av pov tseg tsis txhob tseg cia.



**Thov pab tswj cov nroj Nkauj Tswm Seb!** Cov neeg uas ua haujlwm saib xyuas tej nroj tsuag tseem tab tom ua haujlwm nrhiav cov nroj no rho pov tseg. Koj txoj kev pab yog nrhiav seb cov nroj no nyob qhov twg. Yog nrhiav tau Nkauj Tswm Seb, hu rau 800-491-1899.

Yog koj xav paub ntau tshaj qhov no, mus saib [www.dodder.org](http://www.dodder.org).



Cal-IPC



Friends of Five Creeks



Friends of Sausal Creek

Promoting Watershed Protection

[www.sausalcreek.org](http://www.sausalcreek.org)



CALIFORNIA DEPARTMENT OF  
FOOD & AGRICULTURE

Produced by California Invasive Plant Council ([cal-ipc.org](http://cal-ipc.org)), Friends of Five Creeks ([f5creeks.org](http://f5creeks.org)), and Friends of Sausal Creek ([sausalcreek.org](http://sausalcreek.org)) with assistance from the California Department of Food and Agriculture ([cdfa.ca.gov](http://cdfa.ca.gov)) and funding from the San Francisco Estuary Project ([sfep.abag.ca.gov](http://sfep.abag.ca.gov)). Design by Studio L'Image ([studiolimage.com](http://studiolimage.com)). Photos from California Department of Food and Agriculture, Contra Costa County Department of Agriculture, Friends of Five Creeks, and Friends of Sausal Creek. Translations by Lori Tsung (Mandarin), Blia Ashley Yang (Hmong), and Ralph Fonseca and Jorge Vargas (Spanish).